

FULLY BALANCED IN-LINE PET VALVE GATING SOLUTION

1-40 drop hot half systems designed for injection blow systems (IBS) and injection stretch blow machines (ISBM).

Specifically engineered to meet the requirements of the competitive PET bottle manufacturing industry, Axiom is focused on delivering higher production quality, higher yield and reduced production costs.

KEY FEATURES

MASTER-SERIES NOZZLES

- Excellent thermal profile (10% Max Variation*).
- Enhanced process control and repeatability.
- Produces high quality parts and minimizes scrap.
- Fast and simple start-up.

ADVANCED VALVE GATED DESIGN

- Superior gate quality.
- Decreases cycle times.

PET DUST MANAGEMENT CONTROL SYSTEM

- Special sealing mechanisms and venting channels.
- Significantly minimizes dust accumulation inside the system.
- Extends maintenance intervals.
- Helps prevent failures and unscheduled downtime.

BRAZED HEATER TECHNOLOGY

- Superior reliability maximizes uptime.
- Eliminates spare heater costs.

IFLOW MANIFOLD TECHNOLOGY

- Industry leading mold fill balance.
- Change color up to 45% faster.



12 drop valve gated hot half



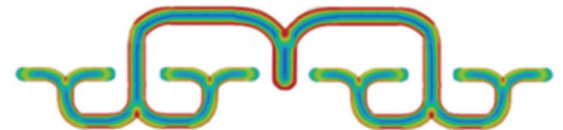
SPECIFICATIONS

Nozzle drops	1 to 40
Available Nozzles	Centi, Deci
Shot Range	<15 g to 500 g
Minimum pitch	35 mm (1.38")
Maximum protrusion	170 mm (6.7")
Gate/pin size (dia.)	2.5 or 4 mm (0.098" or 0.157")
Pin stroke	8 mm (0.315")
Actuation	Hydraulic
Hydraulic pressure	30 to 50 bar (435 to 725 psi)



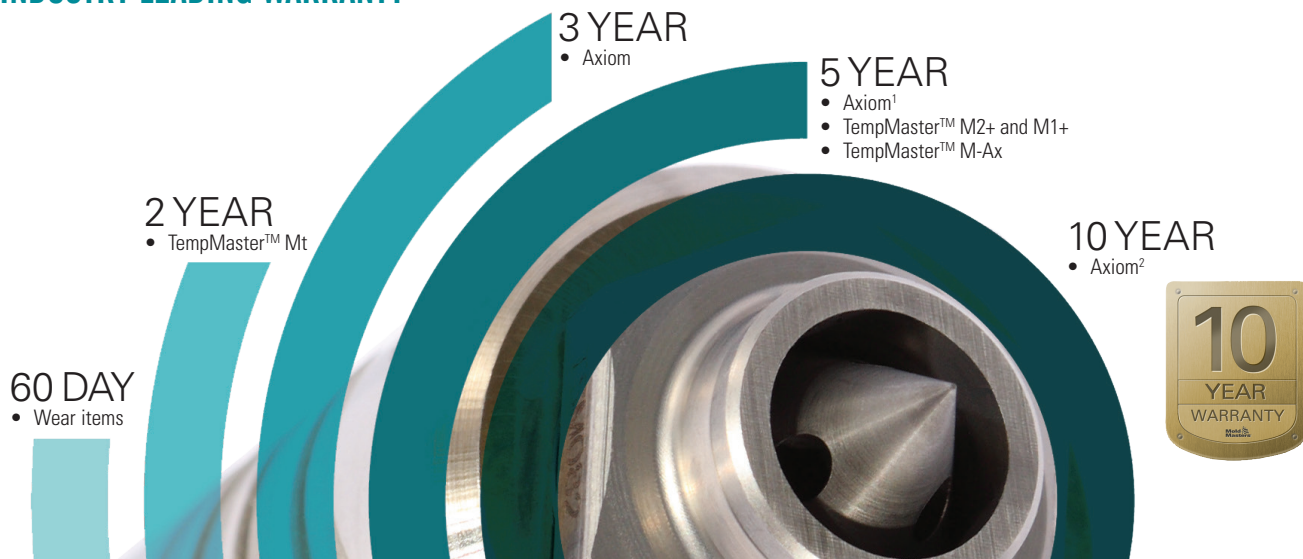
16 drop valve gated hot half

iFLOW TECHNOLOGY



Enhanced Shear Control

INDUSTRY LEADING WARRANTY



Please speak to a Mold-Masters representative for complete warranty details. Some conditions and/or limitations apply. Subject to change without notice. ¹ Valid with the purchase of a TempMaster controller OR hot half on the same P.O. Warranty limited to heating circuits of select components which may differ depending on the hot runner system. ² Valid with the purchase of a TempMaster controller AND hot half on the same P.O. Warranty limited to heating circuits of select components which may differ depending on the hot runner system.



TempMaster™ M1+ series

For peak performance and superior results, Mold-Masters recommends using TempMaster M1plus controllers with all Axiom hot runner systems. Unlock your operations full potential with TempMaster.