

## ADVANCED INLINE SIDE GATING

The Melt-CUBE design for applications requiring angled tips or specialized dual-gating capabilities. Simultaneous direct side gating solution of up to 16 cavities per cube eliminates scrap from sub-runners and enhances part quality. Perfect for high cavitation molds producing deep draw medical parts such as pipette tips, syringe barrels, needle shields and more.

### KEY FEATURES

#### HIGH CAPACITY DESIGN

- Available with up to **4x** more gates per drop than some competitive side gating solutions.
- Allows for more compact, efficient and economical mold designs.
- Up to **43%** higher pitch density than some competitive circular systems.

#### GATE LOCATED ANGLED TIPS

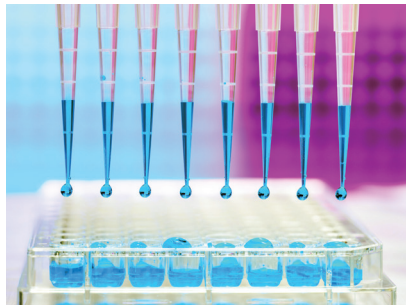
- Not affected by thermal expansion.
- Maintains tip to gate concentricity regardless of liner pitch spacing.
- Excellent leakage protection.
- Accessible from the parting line.

#### BRAZED HEATER TECHNOLOGY

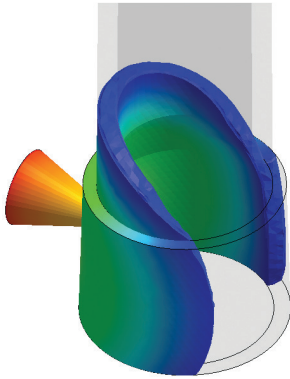
- Precise thermal profile.
- Excellent vestige control and low pressure drop.
- Precise cavity-to-cavity rheological balance.
- Superior reliability maximizes uptime.

#### SPECIALIZED DUAL GATE SYSTEM AVAILABLE

- Enhanced part tolerances and mold performance.
- Increased part weight capacity.

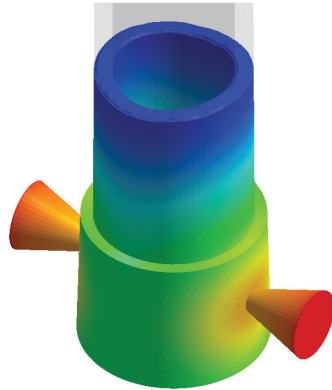


## SPECIALIZED DUAL GATE MELT-CUBE SYSTEM



### Single Gate

This part, fed on one side, shows asymmetrical filling and packing.




### Dual Gate

This part was fed on both sides, resulting in symmetrical filling and packing.

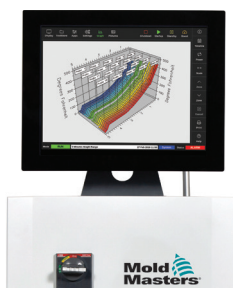
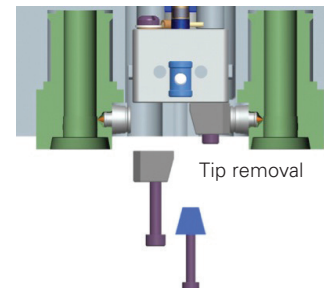
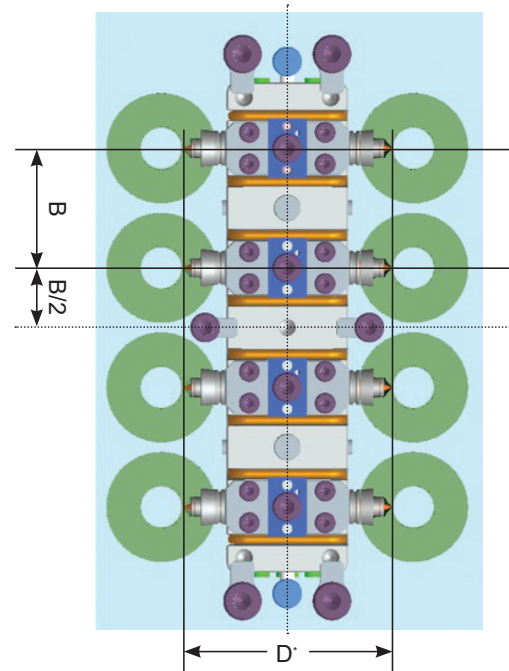
## BENEFITS

- Enhanced balance and more uniform front flow.
- Reduce cycle times by up to **50%**.
- Minimize deflection and core shift.
- Improve TIR by up to **62%**.

## SPECIFICATIONS AND MEASUREMENTS

	MAX PART SIZE	PITCH VALUES "B" (mm)
<b>Standard Melt-CUBE</b>		
2-Cavity	10 g	N/A
4-Cavity	10 g	40, 50
8-Cavity	10 g	20, 30, 40, 50
16-Cavity	10 g	20, 30
<b>Dual Gate Melt-CUBE</b>		
8-Cavity	20 g	30, 40, 50

TIP ANGLE (from horizontal)	TIP TO TIP "D" (mm)	TIP TO TIP "D" (mm)
	<b>Standard</b>	<b>Dual Gate</b>
0	N/A	70.00
15	63.46	63.46
30	64.29	64.29
45	61.20	61.20
60	57.74	57.74



## TempMaster™ M2+ PLUS

For peak performance and superior results, Mold-Masters recommends using TempMaster M2+ controllers with all Melt-Cube enabled hot runner systems. Unlock your operations full potential with TempMaster.