

## WATER FLOW MONITORING SYSTEM

Coolant flow and temperature are often critical factors in achieving consistent production of quality molded parts and faster cycle times. Monitoring individual cooling circuits with WFM, compared with traditional flow regulators, offers molders an advanced solution that achieves greater process accuracy and confidence.

### KEY FEATURES

#### MONITOR INDIVIDUAL CIRCUITS

- Greater process accuracy.
- Quick ID and alerts to various common cooling circuit issues.
- Validate and optimize processes with greater confidence.

#### IO ALARM INTERCLOCK

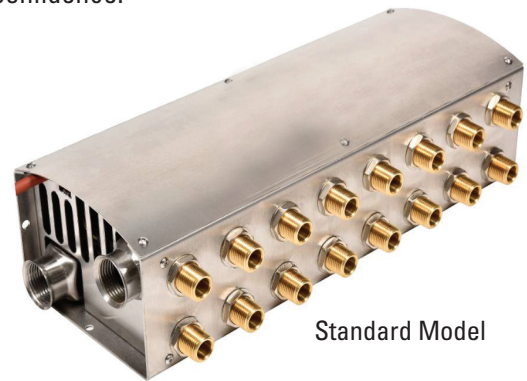
- Triggers an alarm when issues are identified.
- Pauses the molding process until corrected.
- Helps maintain process consistency.

#### ROBUST DESIGN

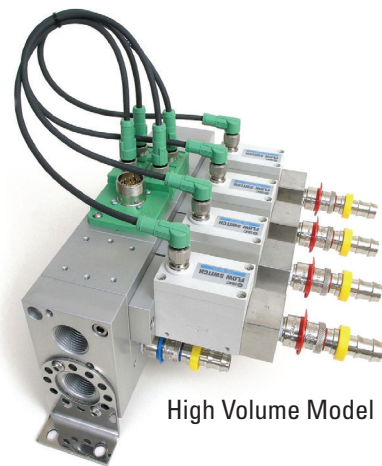
- High accuracy electronic sensors contain no moving parts.
- Can easily tolerate contaminated water and harsh molding environments.
- Stainless steel manifolds prevent rust and contamination.
- High reliability and low maintenance.

#### FLEXIBLE MOUNTING OPTIONS

- Attach to the fixed or moving half of the molding machine.
- Minimizes pipe runs to improve flow rates and reduce cycle times.
- Customizable to suit any customer needs.



Standard Model



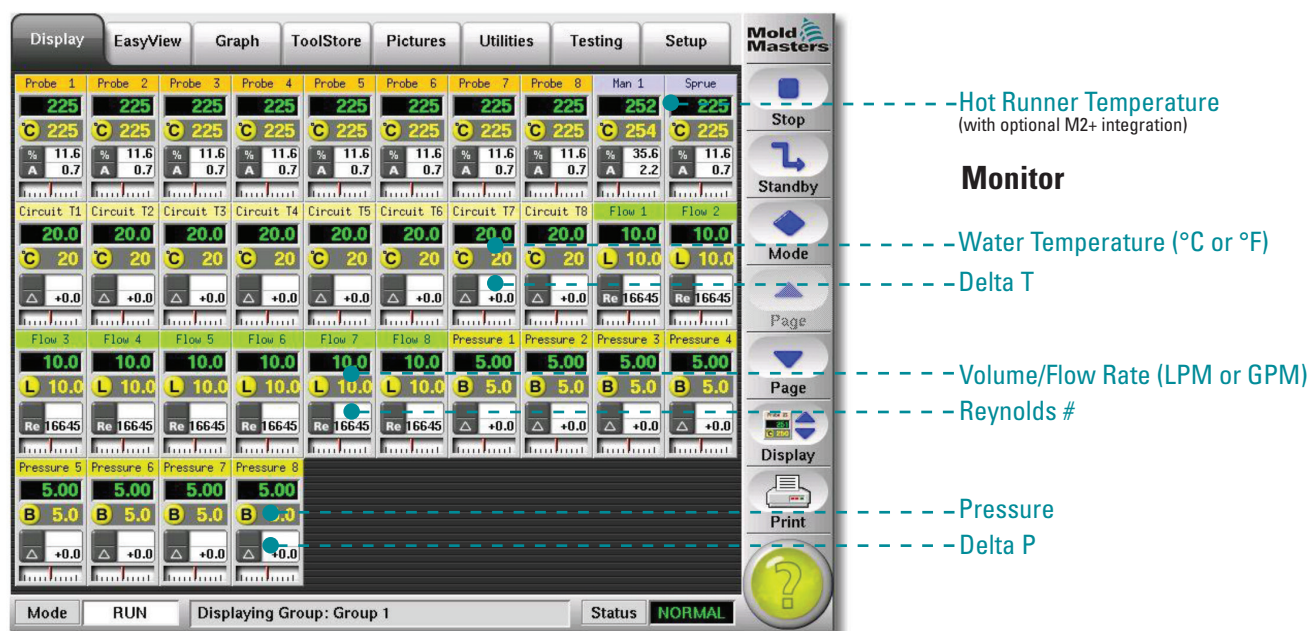
High Volume Model



Compact stand alone control unit. 230 x 144 x 586mm

## EASY TO USE SCREENS

View and manage controls on any laptop or integrated directly on a TempMaster M2+ touch screen to include integrated HRC control.



- Graphical display
- High/low alarm limits (zone)
- High/low warning limits (zone)

- Export data
- Separate alarm signals for water flow, water temperature and hot runners (opt.).

## SPECIFICATIONS

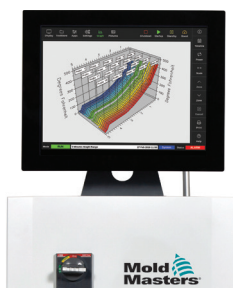
MODEL	FLOW CAPACITY RANGE LPM (GPM)	NO. OF PORTS	CIRCUIT PORT	SUPPLY PORT	OP. TEMP. RANGE (°C / °F)	FLOW RESOLUTION LPM (GPM)
Standard	1 - 40 (0.26 - 10)	4, 8, 12	3/8", 1/2"	1"	0 - 130 (32 - 266)	0.1 (0.01)
High Volume	4 - 100 (1.05 - 26)	4, 8, 12	1/2", 3/4", 1"	1-1/2"	0 - 50 (32 - 122)	0.1 (0.01)

### Options

- Add functionality at any time without hassle.
- Daisy chain units to increase the number of zones.
- Easy integration with all TempMaster M2+ Controllers.

### Note

- Only the Standard model is available in a stand alone configuration.



# TempMaster™ series M2+ PLUS

Integrate WFM functionally into your M2+ hot runner temperature controller to centralize functionality, save valuable floor space and reduce costs. Unlock your operations full potential with TempMaster.