



PRECISION CONTROL FOR SERVO DRIVEN AUTOMATED MOLD FUNCTIONS

Molding environments are increasingly being digitized. Servos for mold functions offer superior precision, control and repeatability over traditional methods. The M-Ax servo motion controller offers the greatest process control accuracy and easiest adjustments of automated linear and rotary mold functions.

KEY FEATURES

PRECISE SERVO CONTROL

- Control a wide variety of mold functions.
- Each M-Ax servo can be easily switched between linear or rotary axis movements.
- Integrated hot runner temperature control available.

SINGLE, LARGE TOUCH SCREEN HMI

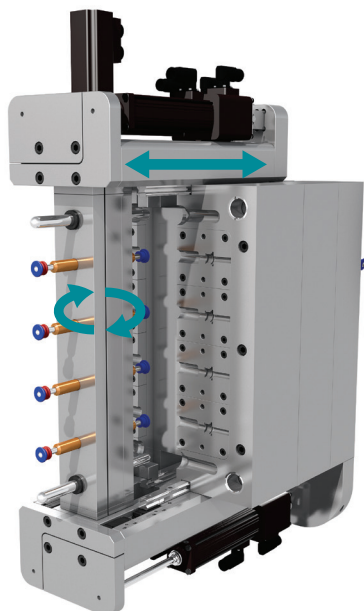
- Simple and intuitive to use.
- Centralized control of servo and temperature control.

FULLY CONFIGURABLE

- Maximum flexibility.
- Programmable user defined I/O.
- Integrate additional molding functions.

ALL ELECTRIC OPERATION

- Viable for clean room applications.
- Reduces energy consumption by up to 60%.



SERVO FUNCTIONS

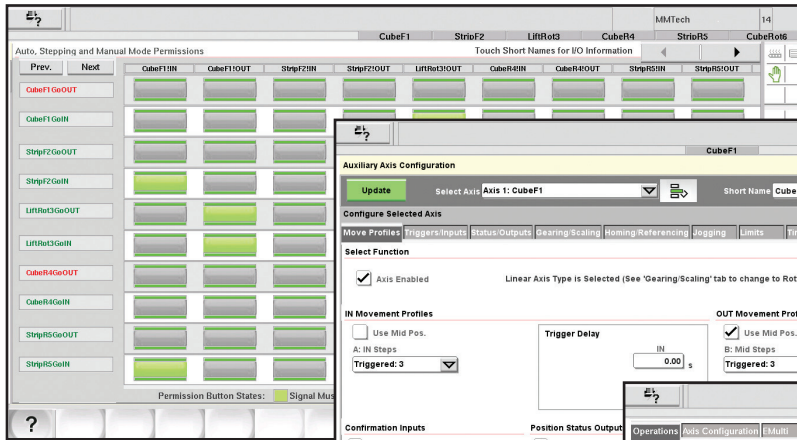
STANDARD

- Valve gates
- Core pulls
- Coining plates
- Index plates
- Stripper plates
- Ejector plates
- Rotary tables
- Spin stack

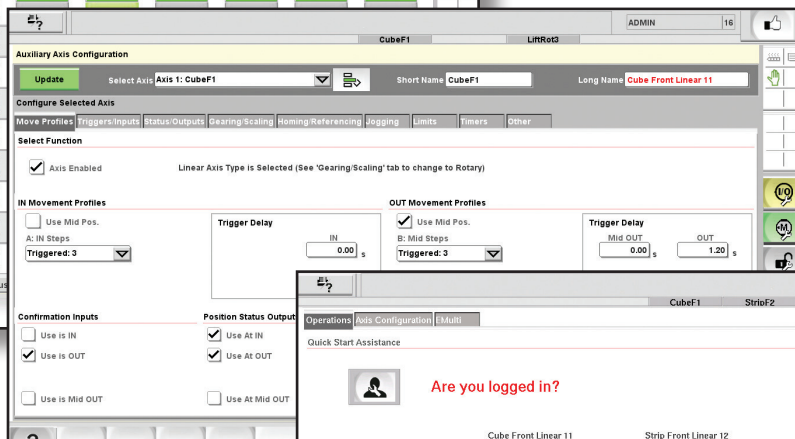
ADVANCED

- E-Drive
- E-Multi
- And more...

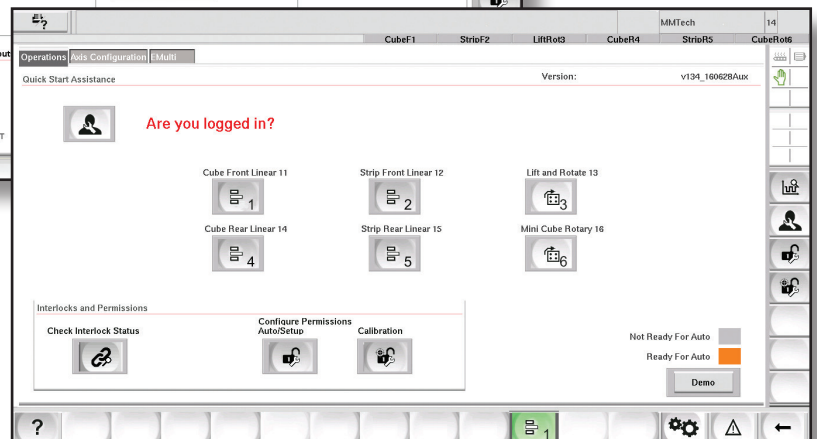
INTUITIVE CONTROL SCREENS



Movement permissions



Axis configurations



Graphical Startup Wizard

- Simple to use
- Requires minimal familiarization
- Faster start-ups

SPECIFICATIONS

| | |
|---|--------------------|
| Continuous current per drive | 11.5 amps (28 max) |
| Continuous mechanical output per drive | 3.5 KW |
| Configurable IO standard | 16 (8 In/8 Out) |
| IMM interface | E67 |
| Mains voltage | 3 AC 200-480 V |

SYSTEM OPTIONS

- Rotary or Linear movements
- Up to 64 programmable I/O (32/32)
- Robot E67 Interface (Out)
- Bosch or Exlar motor compatible
- Motors supplied (customer specified)
- Integrate TempMaster hot runner temperature control featuring precise APS control technology

