



THERE'S A NEW PLAYER
IN PET



THERE'S A NEW PLAYER IN PET

Mold-Masters has learned from our past and listened to our customers. We're excited to breathe new life into the PET market as your new, fully capable alternative equipment supplier. This isn't a re-launch of the same product we had years ago but newly developed, proven PET specific solutions focused on meeting the high performance demands of our customers. That's performance delivered from Mold-Masters.

NEW HIGH-PERFORMANCE HOT RUNNER SYSTEM FOR PET PREFORMS

PET-Series incorporates features that focus on enhancing part quality, increasing productivity and lowering part cost. PET systems are compatible with many industry standard layouts, existing molds and fit into all major machine platforms including those with post mold technology. We also have the ability to accommodate non-standard configurations.

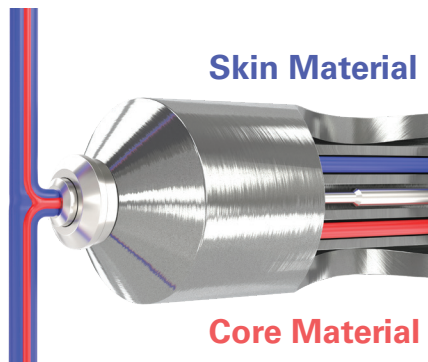
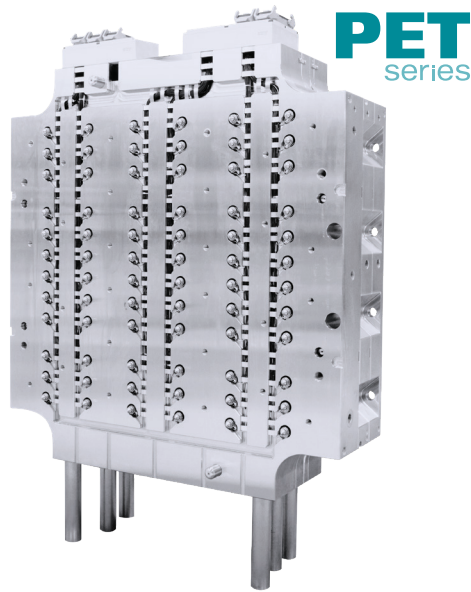
READY TO SUPPORT YOU IN ANY APPLICATION

Mold-Masters has the ability to process PET in any format regardless of how advanced the application. Our products are engineered and proven to deliver the results you demand.

- Standard Mono-Layer
- Co-injection Multi-Layer Barrier
- Bio-resins
- PCR (Post Consumer Recycled)

COMPLETE FLEXIBILITY

As a company, Mold-Masters is focused on hot runners. This means our customers have complete flexibility to work with the mold and machine suppliers of their choice.



MOLD-MASTERS ORIGINAL TECHNOLOGY

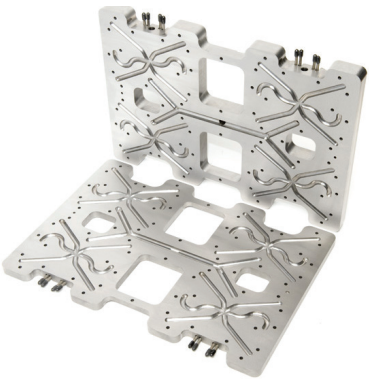
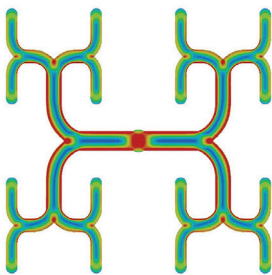
Not every hot runner system is the same. It's our original technology that you can't see that differentiates Mold-Masters from everyone else. For our customers, this translates into enhanced production quality, higher productivity and lower part costs. Unlock your operations full potential with Mold-Masters Technology. That's "Performance Delivered".

IFLOW MANIFOLD TECHNOLOGY

iFLOW manifolds are manufactured from 2 separate pieces of steel where runners are carefully milled and polished into each half. iFLOW has the flexibility to incorporate a range of patented melt flow geometries, flow path options and runner shapes that just aren't possible with conventional gun-drilled manifolds. Once brazed together, they have the strength as though it was made from a single solid piece of steel.

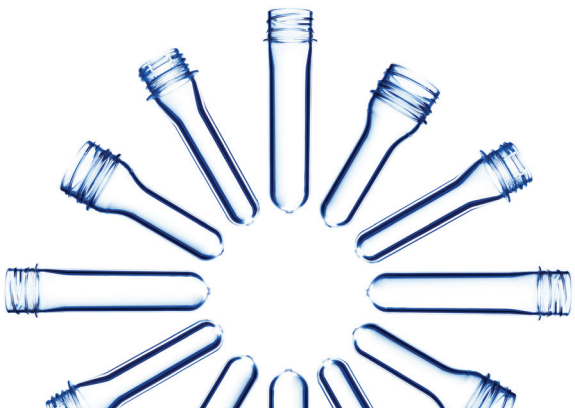
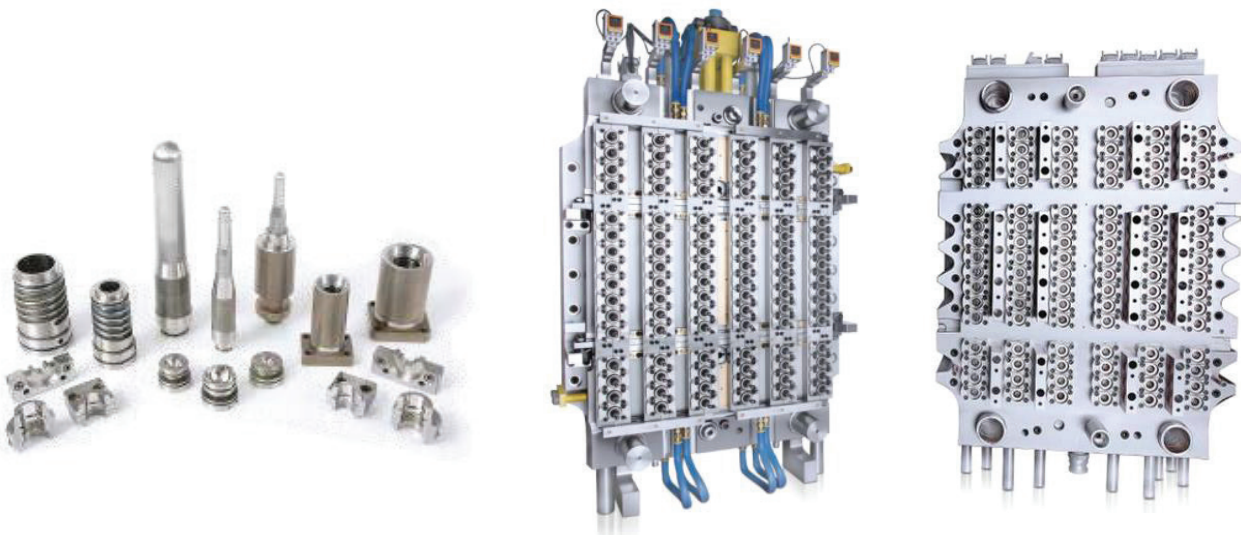
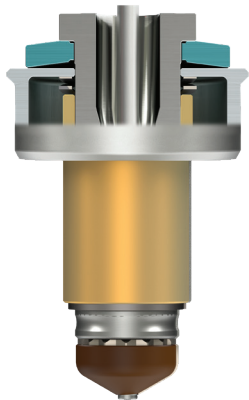
Advantages of iFLOW include:

- Extensive flexibility for design optimization
- Best in-class melt management
- Industry leading mold fill balance
- Rapid color change performance
- Faster fill times
- Reduced fill pressure and AA levels
- Higher L/t preforms for light weighting



NEW MASTERSHIELD LEAK PROTECTION TECHNOLOGY

An innovative robust spring design that pre-loads the nozzle to the manifold providing an effective seal for enhanced leakage protection during cold start-ups and in the event of accidental overheating. Compared to conventional designs, it offers a much wider and more reliable range of operation. By minimizing excessive load on the entire stack that can result in plate deflection/bowing it also helps to reduce gate wear. Mold-Masters MasterSHIELD Technology is a standard component on all PET-Series hot runner systems.

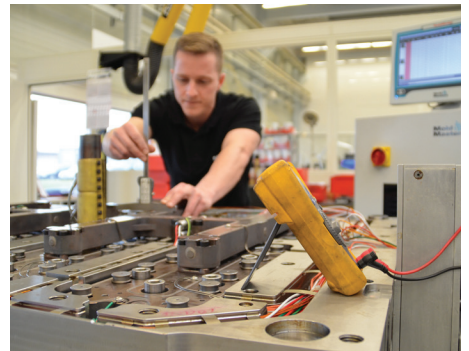
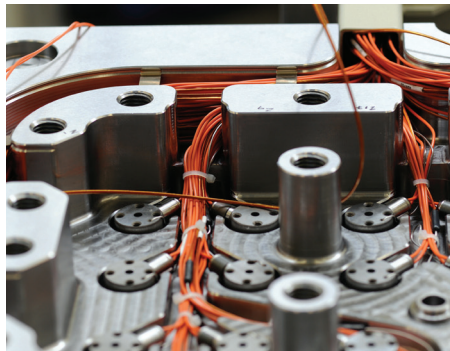
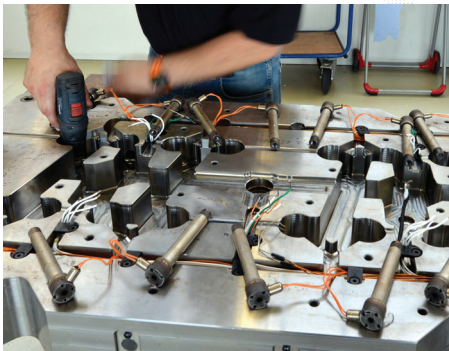




YOUR GLOBAL FULL SERVICE AND SUPPORT TEAM

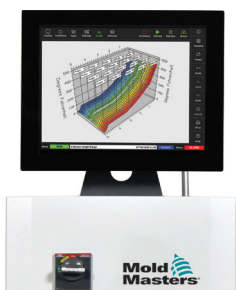
Once you receive your Mold-Masters hot runner system and begin production, you're in the knowledgeable and experienced hands of our MasterCARE aftermarket service professionals. MasterCARE personnel are your service partners that provide a range of services designed to maintain part quality, maximize uptime and minimize unscheduled interruptions.

- Spare parts
- Service & Repairs
- Technical Support
- Refurbishments
- Preventative Maintenance (Lifecycle management)
- Training



FOR MORE INFORMATION PLEASE CONTACT:

PETSolutions@moldmasters.com
www.moldmasters.com



TempMaster™ **M2+** PLUS
series

For peak performance and superior results, Mold-Masters recommends using TempMaster M2+ temperature controllers with all PET-Series hot runner systems. Unlock your operations full potential with TempMaster.