

Quick Guide for Tempmaster™ M3 Controller



Main Screens and Menus

Configure the Controller

- Create a New Tool
- Configure Control Cards
- Configure Tool Parameters Zone By Zone
- Configure Tool and System Settings
- Save a Tool / Settings to the Toolstore
- Set Zone Temperature
- Set up Easyview Screen

Operate the Controller

- Startup
- Load Tool Settings
- Change Modes—Individual Zones
- Change Modes—Multiple Zones
- Check Zone Performance
- Shutdown

Global Support

Main Screens and Menus

Display Screen



Functions:

- Monitor and Information:** observe zone condition
- Control:** side command buttons change from page to page
- Navigation:** tabs allow the user to switch between the different pages

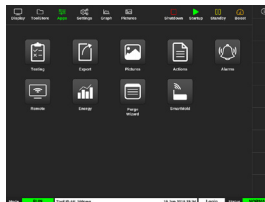
ToolStore Screen



Description:

List of tools with names and saved settings.

Apps Screen



Gives access to other pages:

- Testing
- Export
- Pictures
- Actions
- Alarms
- Remote
- Energy
- Purge Wizard
- Smart Mold

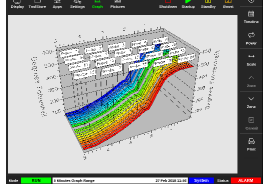
Settings Screen



Description:

Gives access to tool and system settings.

Graph Screen



Description:

Displays graphs of temperature or power versus time for up to 20 zones.

Configure the Controller

Create a New Tool

1. Choose [ToolStore].
2. Choose an empty tool slot and then choose [Detect].
3. Enter the password if required.
4. Enter a tool name.

Configure Control Cards

1. Choose [Settings].
2. Choose a zone from the Type column.
3. Choose [Set].
4. Choose a zone type.
5. Change header color if required.
6. Choose [OK] to accept the changes.

Note: all temperature control cards initially default to probe zones and use probe default values.

Configure Tool Parameters Zone By Zone

1. Choose [Settings].
2. Choose the zone or zones to be configured and choose the column of the required parameter.
3. Choose [Set] and enter the password if required.
4. Set the required value.
5. Repeat steps 2 through 5 for each parameter that requires adjustment.

NOTE: see the user manual for a list of tool parameters and their descriptions.

Configure Tool / System Settings

1. Choose [Settings] and then choose [Config].
2. Enter the password if required.
3. Choose [Tool Config] from Tool Settings or [System Config] from System Settings.
4. Choose the required setting and enter the required value or option.
5. Choose [OK] to accept the value.

IMPORTANT: to save a setting change permanently, save it to the ToolStore.

Save a Tool / Settings to the Toolstore

1. Choose the ToolStore page.
2. Choose the required tool.
3. Choose **[Save]**.

Set Zone Temperature

1. Choose the required zone or zones.
2. Choose **[Set]**.
3. Choose one of the options:
 - Enter a new value for the temperature
 - Choose **[Add]** - raise the overall temperature
 - Choose **[Subtract]** - lower the overall temperature
4. Choose **[Enter]** to set required temperature.

Set up the Easyview Screen

Step One: Import A Picture

1. Save one or more pictures onto a USB memory stick.
2. Insert the USB memory stick into the console.
3. Choose **[Pictures]**.
4. Choose **[Import]** and enter password if required.
5. Choose the required picture.

Step Two: Link a Picture

1. Choose the required picture.
2. Choose **[Link]** and enter the password if required.
3. Choose an empty slot and press **[OK]** to make the link.

Step Three: Add Mini Panel to Tool Picture

1. Choose the required picture.
2. Choose **[Show]** and enter the password if required.
3. Choose **[Place]** to open the zone selection box.
4. Choose **[Auto]** or **[Alias Name]**.
 - **[Auto]**: the zones will be placed sequentially where you touch the screen. You do not need to press **[Place]** before every zone.
 - **[Zone number or alias]**: choose a specific zone to place and press the **[Place]** button each time a new zone is to be located.

Operate the Controller

Startup

1. Use the main switch to energize the cabinet.
2. After the cabinet is switched on, press the console switch until the display lights up.

Once the display screen is on, you have two options:

- If console startup is set to **Stop**, then the tool remains at zero power, and it does not heat up.
- If the console startup is set to **Startup, Standby** or **Run**, the controller applies power to the zones so that they heat up.

Load Tool Settings

1. Choose the required tool and choose **[Load]**.
2. Choose **[OK]**.

NOTE: if the controller is in Run mode and a tool with a different temperature setting is loaded, the tool will immediately change to run at the new temperature setting.

Change Modes—Individual Zones

1. Choose the required zone.
2. Choose **[Set]** and enter the password if required.

3. Choose one of the two following options:
 - **[Boost]**: to raise the temperature of that zone until Boost time expires.
 - **[OFF]**: to switch off the zone.

Change Modes—Multiple Zones

1. Choose the required zones.
2. Choose **[Set]** to display the keyboard.
3. Choose one of the following options:
 - To change to Manual mode: choose **[Manual]** and set percentage power.
 - To Slave a zone: choose **[Slave]** and choose a similar Master zone from the zone list.
 - To return to Auto mode: choose **[Auto]** and enter the required zone temperature.

Check Zone Performance

The Graph screen shows graphs of temperature versus time or power versus time for up to 20 zones.

1. Choose **[Graph]** to open the Graph screen.
2. Choose **[Timeline]** to show history of operation for the tool.
3. Choose **[Power]** to show power on the bottom axis of the graph.
4. Choose **[Temp]** to show temperature on the bottom axis of the graph.
5. Choose **[Scale]** to choose the required time interval. Options include: 5 minutes, 30 minutes, or 24 hours.
6. Choose **[▲]** or **[▼]** to move up or down through the zones.

Shutdown

1. Choose **[Mode]** from the Display screen and enter the password if required.
2. Choose **[Stop]** to reduce the heating load to zero.
3. Choose **[Shutdown]** from either the Mode box or from the upper menu buttons and then accept the confirmation on the screen.
4. Choose **[i]**.
5. From the Information screen choose **[Exit]**.
6. Choose **[OK]** to turn the console off.

Global Support

Global Headquarters Canada Mold-Masters (2007) Limited tel: +1 905 877 0185 canada@moldmasters.com	European Headquarters Germany Mold-Masters Europa GmbH tel: +49 7221 50990 germany@moldmasters.com
Asian Headquarters China Mold-Masters (KunShan) Co, Ltd tel: +86 512 86162882 china@moldmasters.com	South American Headquarters Brazil Mold-Masters do Brasil Ltda. tel: +55 19 3518 4040 brazil@moldmasters.com
India Mold-Masters Technologies Private Limited tel: +91 422 423 4888 india@moldmasters.com	Japan Mold-Masters K.K. tel: +81 44 986 2101 japan@moldmasters.com
United Kingdom Mold-Masters (UK) Ltd tel: +44 1432 265768 uk@moldmasters.com	U.S.A. Mold-Masters Injectioneering LLC tel: +1 800 450 2270 (USA only) tel: +1 (248) 544-5710 usa@moldmasters.com