

INTRODUCING OUR LARGEST CAPACITY AUXILIARY INJECTION UNIT

Easily and economically convert any existing medium to large Injection Molding Machine to allow multi-shot capabilities. The successful E-Multi auxiliary injection platform offers proven precision, repeatability, versatility and reliability. Our EM5 model is perfectly suited to meet the processing and capacity demands of your largest multi-material applications across any industry.

KEY FEATURES

HIGH-CAPACITY DESIGN

- 550g to 1,237g shot range.
- Capacity for large parts and high-cavitation molds.

SERVO DRIVEN

- High precision, fast, repeatable and reliable performance.
- Suitable for high tolerance applications.
- Maintain critical shot weight accuracy.

UNIVERSAL COMPATIBILITY

- Can be installed on ANY Injection Molding Machine.
- Seamless operation via IMM interface.
- Integrate robotic interface.

ALL ELECTRIC

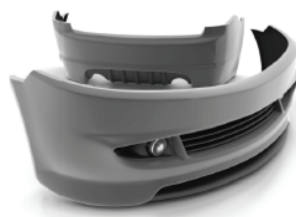
- Energy efficient.
- Viable for clean room applications.
- Minimal maintenance requirements.

GLOBAL SUPPORT NETWORK

- Industry-leading aftermarket support.
- Many spare parts in stock and ready to ship.



EM5



ADVANCED FULL FUNCTION CONTROLLER

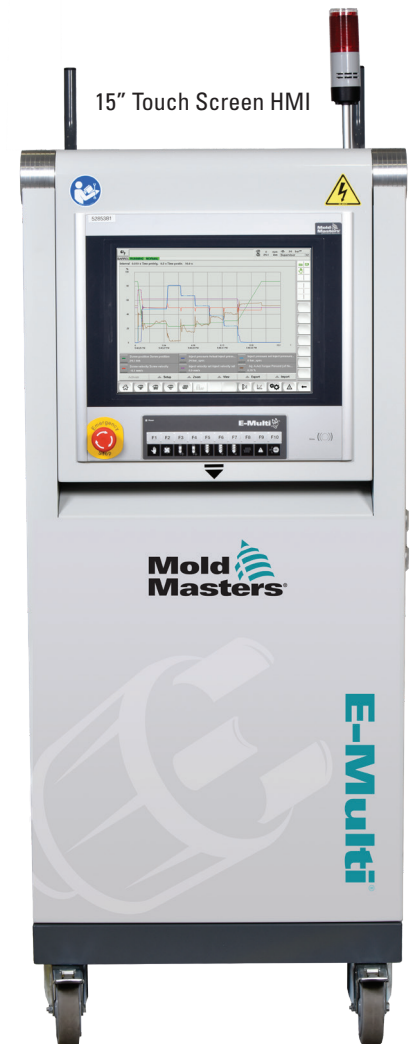
The full featured E-Multi controller, with easy to navigate touch screen, gives the operator complete process flexibility.

As standard, the controller is equipped with SPC (Statistical Process Control), data logging and Multi-Level password and RFID access cards so only authorized individuals can change processes.

Centralize and enhance your molding processes by integrating additional molding functions directly into the E-Multi controller.

STANDARD PACKAGE

INJECTION UNIT	CONTROLLER
<ul style="list-style-type: none"> General purpose plastizing screw 	<ul style="list-style-type: none"> 15" touch screen interface
<ul style="list-style-type: none"> Servo carriage (for sprue break) 	<ul style="list-style-type: none"> (2) RFID access cards (operator/supervisor)
<ul style="list-style-type: none"> Material feed tube or hopper 	<ul style="list-style-type: none"> Machine interface cable (E67)
<ul style="list-style-type: none"> Oil fill kit 	<ul style="list-style-type: none"> 4m power cable (3-phase) 400V/460V
<ul style="list-style-type: none"> Lifting kit 	<ul style="list-style-type: none"> 7m servo drive cable to E-Multi
	<ul style="list-style-type: none"> Remote diagnostics package
	<ul style="list-style-type: none"> (2) valve gate control
OPTIONS	OPTIONS
<ul style="list-style-type: none"> Robust horizontal mount stand 	<ul style="list-style-type: none"> 36-zone TempMaster HR control (max)
<ul style="list-style-type: none"> Specialty screws 	<ul style="list-style-type: none"> 12 valve gate control (max)
<ul style="list-style-type: none"> Nozzle extensions (heated/unheated) 	<ul style="list-style-type: none"> TempMaster M-Ax auxiliary servo, E-Drive rotary table and index platen controls
<ul style="list-style-type: none"> Shut-off nozzles 	<ul style="list-style-type: none"> E67->SPI/E12 robot IMM interface adapter
<ul style="list-style-type: none"> Mold mounting plate 	
ON-SITE START-UP SUPPORT AND TRAINING	



E-Multi full function controller

Thinking large?

Contact us today!
info@moldmasters.com



YOUR GLOBAL FULL SERVICE AND SUPPORT TEAM

- Spare parts
- Service & Repairs
- Technical Support
- Refurbishments
- Preventative Maintenance (Lifecycle management)
- Training

