

CONFIGURABLE HOT RUNNERS, DELIVERING PERFORMANCE AND VALUE, FAST

The hot runner system that can be configured with your choice of popular 1-4 drop manifold configurations and standard components. Allows simple projects to get off the ground faster and more economically. Inject Velocity into your next project and bring your business up to speed.

KEY FEATURES

CONFIGURABLE

- Manifold layout and custom pitch.
- Nozzles.
- Gating styles.
- Inlets.
- Available as a system only (no plates).

HIGH-PERFORMANCE PROCESSING

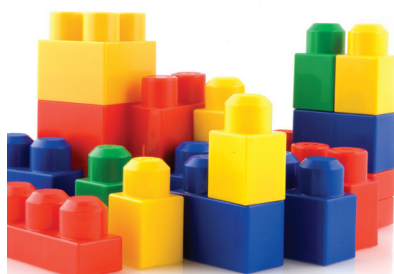
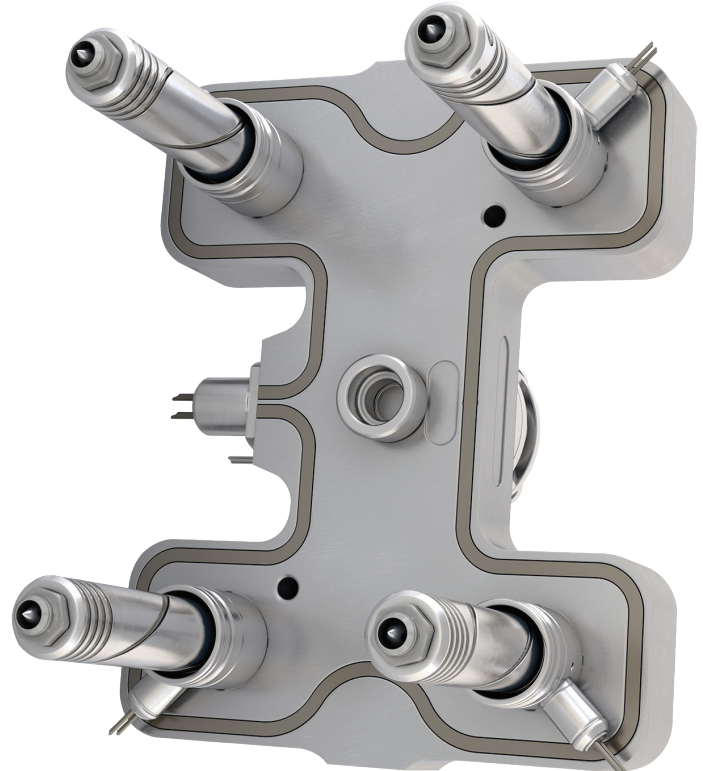
- Excellent thermal profile.
- Produce consistent high-quality molded parts.
- Minimize scrap.

FAST DELIVERY

- Drawings available within 24 hours.
- Shortened system delivery lead times.

SUPERIOR VALUE

- Performance and reliability at an economical price.



COMPATIBLE MATERIALS

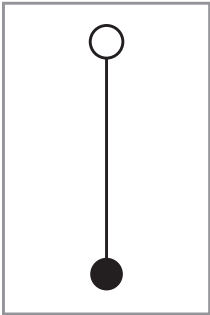
ABS	PP
PA (6, 6.6, 11, 12)	PS / HIPS
PBT	SB / SBS
PC	TPE
PE / HDPE / LDPE	TPU
PMMA	

*Max 15% glass filled. NO additives.

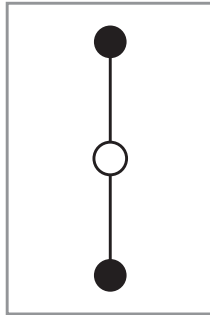
CONFIGURATION OPTIONS

MANIFOLD OPTIONS

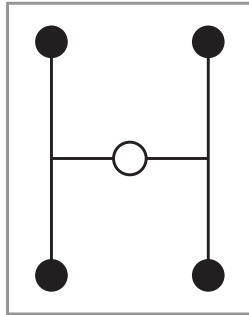
1-Drop Offset



2-Drop Inline



4-Drop H



NOZZLE OPTIONS

NOZZLE RANGE		CENTI	DECI
Shot size* (g)		15 - 50	50 - 500
Runner Ø	Non-Valved (mm)	6	8
	Valved (mm)	8	11
Gate sizes (mm)		0.6 - 2.5	0.6 - 4.0
Length range (mm)		30-90	28-108



*Application dependent.

**Please speak to a Mold-Masters representative for complete warranty details. Some conditions and/or limitations apply. Subject to change without notice.

AVAILABLE GATING STYLES

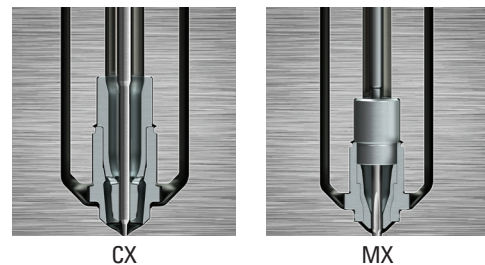
VALVE GATE OPTIONS

- Bi-Metallic C-Valve
- Hot Valve
- Accu-Valve CX
- Accu-Valve MX

THERMAL GATE OPTIONS

- E-Type Torpedo
- F-Type Torpedo
- Bi-Metallic C-Sprue
- Hot Sprue

Accu-Valve



TempMaster™ series Me

For peak performance and superior results, Mold-Masters recommends using TempMaster ME controllers with all Velocity hot runner systems. Unlock your operations full potential with TempMaster.