

Quick Installation Guide for TempMaster Water Flow Manifold

Water Flow Manifolds

Dimensions

Options

Installing the Water Flow Manifold

Global Support



Water Flow Manifolds



4-port

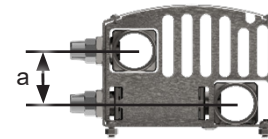


8-port



12-port

Dimensions



| No. of Zones | Total Length (L) mm | Depth (D) mm | Height (H) mm | Distance between Ports (a) mm | Ports (Flow range 1–20 L/min.) | Ports (Flow range 2–40 L/min.) | Main Inlet/Outlet Ports | Weight (kg) |
|--------------|---------------------|--------------|---------------|-------------------------------|------------------------------------|---------------------------------|-------------------------|-------------|
| 4 | 240 | 165 | 115 | 50 | 3/8" NPT male or 3/8" BSPP female* | 1/2" NPT male or 1/2" BSPT male | 1" BSPP female | 3.9 |
| 8 | 440 | 165 | 115 | 50 | 3/8" NPT male or 3/8" BSPP female* | 1/2" NPT male or 1/2" BSPT male | 1" BSPP female | 7.5 |
| 12 | 640 | 165 | 115 | 50 | 3/8" NPT male or 3/8" BSPP female* | 1/2" NPT male or 1/2" BSPT male | 1" BSPP female | 10 |

*Default configuration for the UK. The unmarked ports are the default configuration for North America.

Options



Water manifold cable



Ball valves on termination ports

Installing the Water Flow Manifold (WFMd)

Required equipment: Data cable with a male HA4 connector and a female M12 connector

1. Mount the WFMd using the mounting brackets and M6 bolts.



Figure 1-1 Side view of WFMd with mounting brackets highlighted

2. Install the end plugs on one set of inlet and outlet ports.

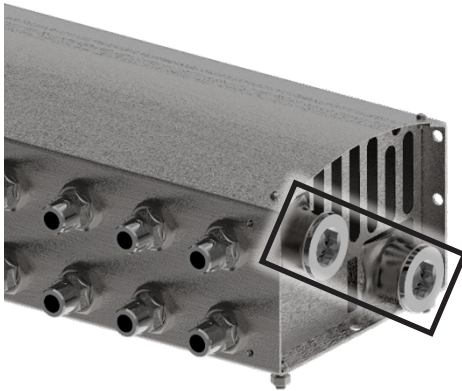


Figure 1-2 Side view of WFMd with end plugs installed (highlighted)

3. Install the female fittings on the other set of inlet and outlet ports. See the table on the first page for more information about the fittings.

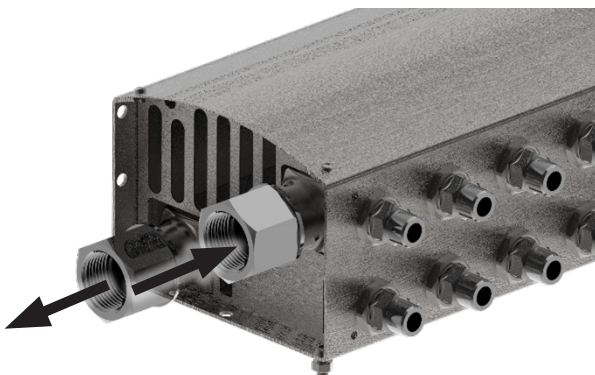


Figure 1-3 Side view of WFMd with female fittings installed on the inlet and outlet ports

4. Attach the feed pipe from the central water system to the inlet port (upper corner; incoming arrow of Figure 1-3).

5. Attach the process-water-returning pipe to the outlet port (bottom corner; outgoing arrow of Figure 1-3).
6. Connect fittings and hoses to the termination ports of the WFMd.



Figure 1-4 Front view of WFMd showing termination ports

The top termination ports route water to the mold.

The bottom termination ports route water from the mold back to the main outlet port.

7. Connect the hoses to the mold.
8. Connect the water manifold cable to the female M12 connector of the data cable.
9. Connect the male HA4 connector of the data cable to a female HA4 terminal on a Mold-Masters temperature controller.

Global Support

| | |
|---|--|
| <p>Global Headquarters Canada Mold-Masters (2007) Limited tel: +1 905 877 0185 canada@moldmasters.com</p> | <p>European Headquarters Germany Mold-Masters Europa GmbH tel: +49 7221 50990 germany@moldmasters.com</p> |
| <p>Asian Headquarters China Mold-Masters (KunShan) Co, Ltd tel: +86 512 86162882 china@moldmasters.com</p> | <p>South American Headquarters Brazil Mold-Masters do Brasil Ltda. tel: +55 19 3518 4040 brazil@moldmasters.com</p> |
| <p>India Mold-Masters Technologies Private Limited tel: +91 422 423 4888 india@moldmasters.com</p> | <p>Japan Mold-Masters K.K. tel: +81 44 986 2101 japan@moldmasters.com</p> |
| <p>United Kingdom Mold-Masters (UK) Ltd tel: +44 1432 265768 uk@moldmasters.com</p> | <p>U.S.A. Mold-Masters Injectioneering LLC tel: +1 800 450 2270 (USA only) tel: +1 (248) 544-5710 usa@moldmasters.com</p> |