

## DROP IN, CONNECT AND INJECT

A completely pre-assembled and pre-wired system which allows for quick and easy one step drop in installation and connection. Ensures your mold is back into production as quickly as possible. Focused on high quality economical production of medium to large parts it is the ideal system for automotive, appliance, logistic and many other similar applications.

### KEY FEATURES

#### COMPLETELY PRE-ASSEMBLED

- Fast, one-step installation.
- Requires up to 70% less time to assemble and install.
- Delivered pre-wired, pre-plumbed and tested.

#### WIRE ARMOUR

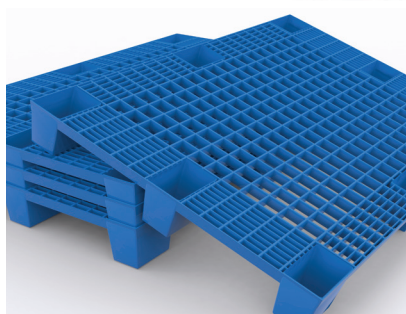
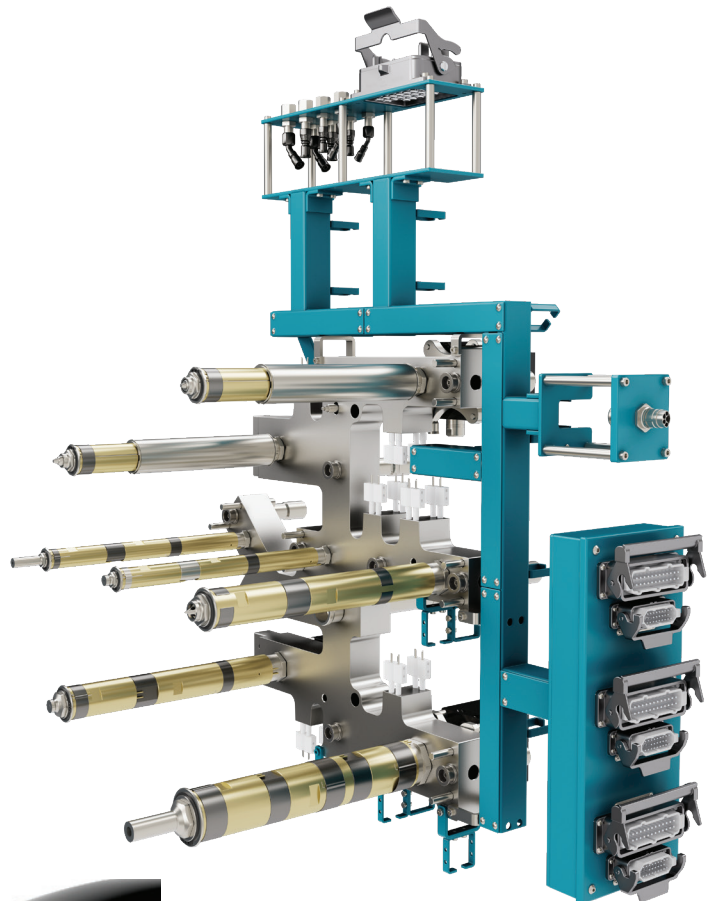
- Protects and routes all lines.
- Acts as a stable mounting platform for plumbing.
- Reduces plate machining requirements.

#### FUSION-SERIES G3 NOZZLES

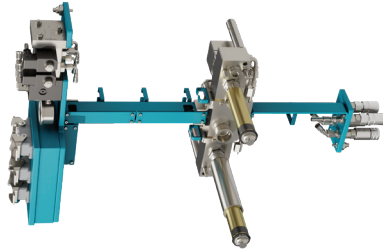
- Precise thermal profile.
- Multiple heater zones for enhanced thermal control of extended nozzle lengths.
- Field replaceable heaters minimize downtime.
- Threaded nozzle base for integrated leak protection.

#### GLOBAL SUPPORT NETWORK

- Technical and Field support.
- Optimization services minimizes risk.
- Faster and more precise mold integration.
- Rapid spare part supply.

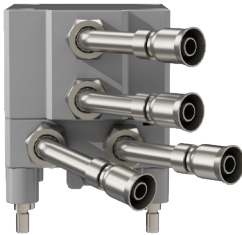


## G3 ENHANCEMENTS



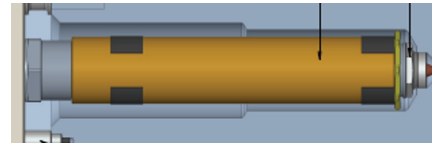
### Room Temperature Installation

- Makes installation/maintenance quicker, easier and safer than heated install.



### Compact Actuators

- Cut-out is same or smaller than G2.
- Standardized with Anti-rotation and valve pin disconnect.
- Swivel fittings can rotate 180° which allows lines to be re-positioned for easier access.



### Compact Nozzle Bore Cut-outs

- Reduced by up to 17%.
- Minimizes cut-out requirements.



### Compound Nozzles

- Improves gate access in areas with limited clearance.
- Special durable one-piece tapered nozzle body design.
- Minimizes pressure drop and enhances melt flow performance.

## SPECIFICATIONS

NOZZLE RANGE	SHOT WEIGHT PER GATE*	NOZZLE LENGTHS (mm)	RUNNER CHANNEL Ø		BORE Ø (mm)		MINIMUM PITCH		
			NON-VALVE	VALVE	FRONT	REAR	HY	PN	NV
<b>F3000</b>	<15g	60 - 220	5mm	7mm	20	24	43mm	65mm	34mm
<b>F4000</b>	15g - 50g	60 - 400	6mm	8mm	26	30	43mm	65mm	36mm
<b>F5000</b>	50g - 500g	80 - 500	8mm	11mm	36	44	65mm	85mm	42mm
<b>F6000</b>	500g - 3,500g	80 - 800	12mm	16mm	46	54	65mm	85mm	52mm
<b>F7000</b>	3,500g - 5,000g	80 - 1,000	18mm	22mm	53	68	65mm	105mm	59mm
<b>F8000</b>	5,000g +	80 - 1,000	22mm	26/28mm	72	87	95mm	145mm	95mm

## AVAILABLE GATING STYLES

### VALVE GATING

- Bi-Metallic C-Valve.
- Hot Valve (+Extended).
- Cylindrical Hot Valve.
- Ball Nose.

### THERMAL GATING

- E-Type Torpedo (+Extended).
- F-Type Torpedo.
- C-Sprue.
- Hot Sprue (+Extended).

## SYSTEM OPTIONS

- Waterless actuators (HY/PN).
- Servo electric Valve Gate Control (SeVG+).
- Sequential Valve Gate control (SVG - PN/HY valve bank).
- Valve pin position monitoring.
- Valve pin opening speed control (HY flow control valve).



# TempMaster™ M1+ series

For peak performance and superior results, Mold-Masters recommends using TempMaster M1plus controllers with all Fusion-Series G3 systems. Unlock your operations full potential.