

SEQUENTIAL VALVE GATE CONTROL

Enhanced control of valve gate flow sequence and timing for pneumatic or hydraulic systems. Improve mold balance and part quality. Essential control when molding complex or large parts.

KEY FEATURES

ENHANCED FILL CONTROL

- Programmable sequence and timing.
- Manage up to 24 valves.
- Up to 4 steps per cycle.

LARGE INTUITIVE TOUCH SCREEN HMI

- Quick and easy process monitoring and adjustments.
- Real time graphs.
- Configurable Easy View status page.

IMM COMMUNICATION

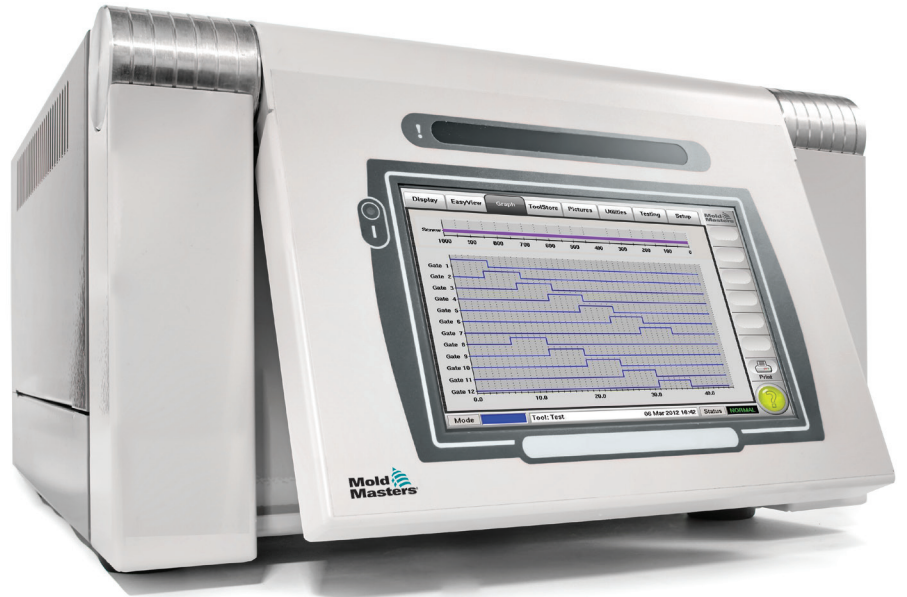
- Controller links triggers to the IMM.
- Ensures process precision and repeatability.

UNIVERSAL COMPATIBILITY

- Easily connect to Mold-Masters or any other manufacturers valve gated hot runner system.

OPTIONAL FLOW CONTROL VALVES (HY)

- Control and adjust valve pin opening speeds.
- Minimize or eliminate visual defects common with large part production.
- Upgrade your Hydraulic system at anytime.

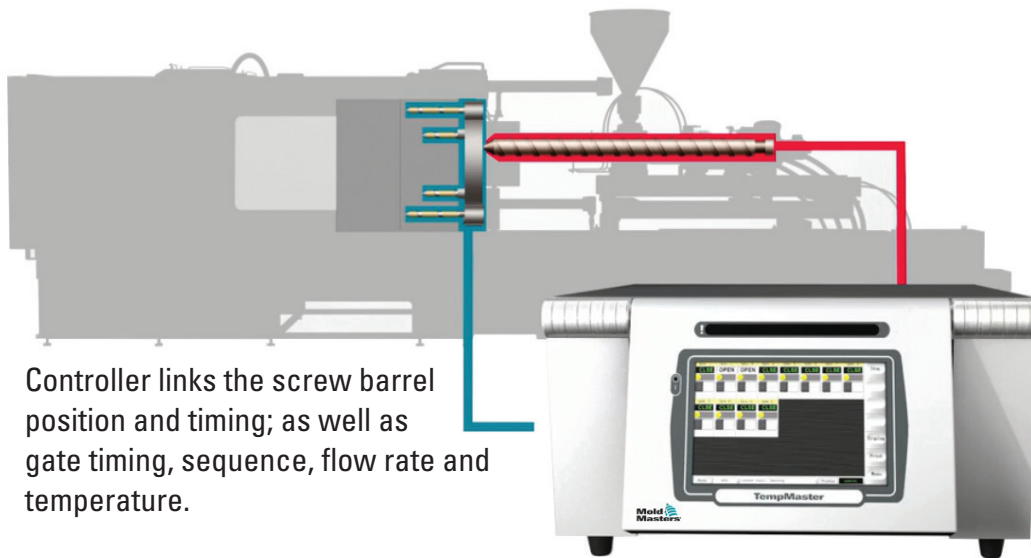


SVG Standalone Controller Unit

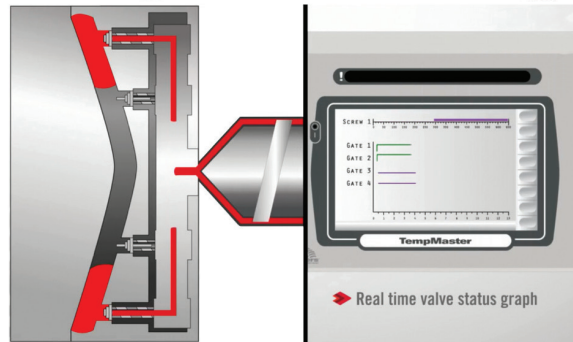
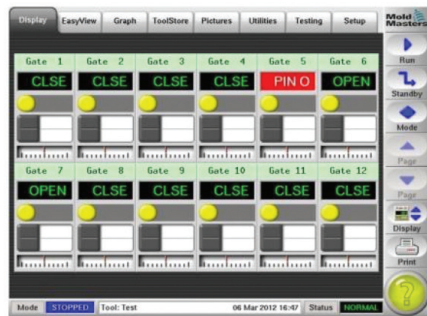


Gate	Step 1 Open Trigger	Step 1 Open Value	Step 1 Close Trigger	Step 1 Close Value
Gate 1	Time (abs)	0.00 secs	Time (inc)	6.00 secs
Gate 2	Time (abs)	5.00 secs	Time (inc)	6.00 secs
Gate 3	Time (abs)	10.00 secs	Time (inc)	6.00 secs
Gate 4	Time (abs)	15.00 secs	Time (inc)	6.00 secs
Gate 5	Time (abs)	20.00 secs	Time (inc)	6.00 secs
Gate 6	Time (abs)	25.00 secs	Time (inc)	6.00 secs
Gate 7	Time (abs)	30.00 secs	Time (inc)	6.00 secs
Gate 8				
Gate 9				
Gate 10				

Quick and simple process set-up



Controller links the screw barrel position and timing; as well as gate timing, sequence, flow rate and temperature.



NEW

8z "S" cabinet dimensions have now been reduced by **53%**



Model: SVG-12C1

SPECIFICATIONS

Screen	7" Color Touch Screen
Valve Gates	8, 12 or 24
Gate Activation	Single Solenoid Valves
Digital Inputs	Pin Position Back/Forward
Input Triggering	Dry Contact or 24VDC
Digital Input Triggers	Programmable Sequence Start
Digital Outputs	Fused at 2 amps
Analog Inputs	(2) 0-10 volts, 4-20ma
Modes	Automatic and Manual
Timer Selections	Absolute and Incremental
Gate Confirmations	Pin Position Feedback
Analog Signals	Position, Pressure and Volumetric
Power Supply	300W, 500W, 1000W 24V DC

OPTIONS

- Valve pin opening speed control (HY only).
- Valve pin position monitoring.
- Hydraulic valve bank and power pack.
- Pneumatic valve bank and power pack.
- Up to 12 additional digital and analog triggers.
- Integrated M2 Hot runner temperature control featuring precision APS Technology.
- NEW SVG Powerpack combines M2 Temp control, SVG, Hydraulic power pack and solenoid valve bank all in one package.

INCLUDES:

- 4.8m (15') Cable Set.
- Quick Start Guide.

Cabinet Size	S	M
Model	SVG-12C1	SVG-12 SVG-24
Gates	8	12, 24
Dimensions	29x13x18 cm (12x5x7")	35x36x21cm (14x14x8")
Power Supply (24V DC)	300W	500W 1,000W