

ENABLE SVG ACTUATION CONTROL ON ANY MACHINE CELL

Easily integrate Sequential Valve Gate (SVG) actuation control functionality to a molding cell with Mold-Masters SVG Power Pack. A full stand alone pneumatic or hydraulic system that powers SVG functionality. Ideal for machines that do not have the existing functionality or the necessary capacity.

KEY FEATURES

COMPATIBLE WITH ANY MOLDING MACHINE

- Operates independently to any machine.
- Add capacity to actuate any mold.
- Manage up to 24 valves (standard).

FULL, SELF CONTAINED SYSTEM

- Motors/Pump.
- Electronics.
- Piping.
- Accumulator tank.
- SVG control unit.

UNIVERSAL COMPATIBILITY

- Easily connect to Mold-Masters or any other manufacturers valve gated hot runner system.



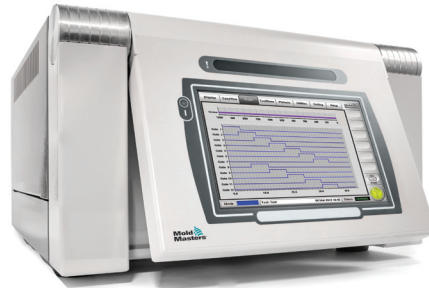
PN Power Pack



HY Power Pack

PLUG & PLAY WITH OUR STANDARD SVG CONTROLLER

- Easily connect to Mold-Masters or any other manufacturer's valve gated hot runner system.
- Programmable sequence and timing.
- Manage up to 24 valves.
- Up to 4 steps per cycle.
- Controller links triggers to the IMM.
- Ensures process precision and repeatability.



EXPANDABLE CAPABILITIES

- Integrate with our TempMaster M2+/M3 hot runner temperature controller.
- Offers the ability to increase the number of SVG control zones up to 60 valves.
- Also available with transformer.



SPECIFICATIONS

Model #	Tank Size (gal/L)	PSI (Bar)	Throughput	Motor Type	Power Supply	Oil Type	Connectors	Solenoids (Zones)
Hydraulic								
HYDPWRUNIT3L	0.8 / 3	1300 (90)	1.8 GPM	AC	230 VAC, 3 phase, 60 Hz Optional 480V, 3P	AW32	1/2" NPT	2-24
HYDPWRUNIT6L	1.6 / 6	1600 (110)						

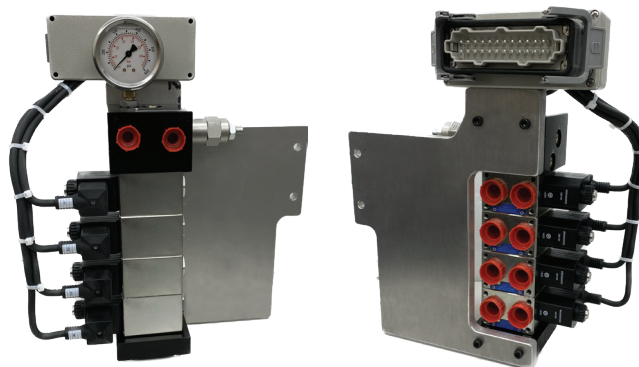
Model #	Tank Size (gal/L)	Pressure Ratio	Supply Pressure PSI (Min/Max)	Max Rated Pressure (PSI)	System Rating (PSI)	Max Temp (°F)	Connectors	Solenoids (Zones)
Pneumatic								
PNEUPWRPACK600	10 / 38	2:1	15 / 150	300	200	180	1/2" FNPT	2-24

OPTIONS

- SVG controller model.
- HY or PN valve bank.
- Temperature control integration.

NOTES

- Hoses & fittings not included.
- 2-year warranty.



HY 4z Valve Bank Assembly