



PRECISION CONTROL FOR SERVO DRIVEN AUTOMATED MOLD FUNCTIONS

Molding environments are increasingly being digitized. Servos for mold functions offer superior precision, control and repeatability over traditional methods. The M-Ax servo motion controller offers the greatest process control accuracy and easiest adjustments of automated linear and rotary mold functions.

KEY FEATURES

PRECISE SERVO CONTROL

- Control a wide variety of mold functions.
- Each M-Ax servo can be easily switched between linear or rotary axis movements.
- Integrated hot runner temperature control available.

SINGLE, LARGE TOUCH SCREEN HMI

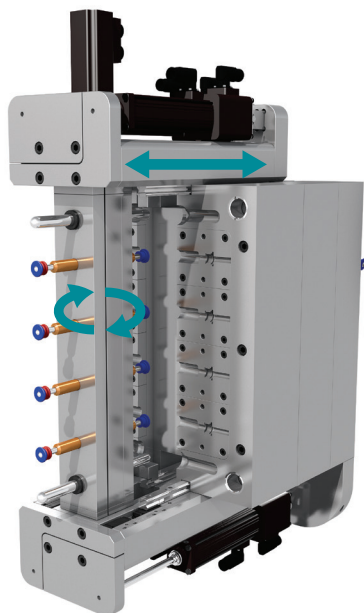
- Simple and intuitive to use.
- Centralized control of servo and temperature control.

FULLY CONFIGURABLE

- Maximum flexibility.
- Programmable user defined I/O.
- Integrate additional molding functions.

ALL ELECTRIC OPERATION

- Viable for clean room applications.



SERVO FUNCTIONS

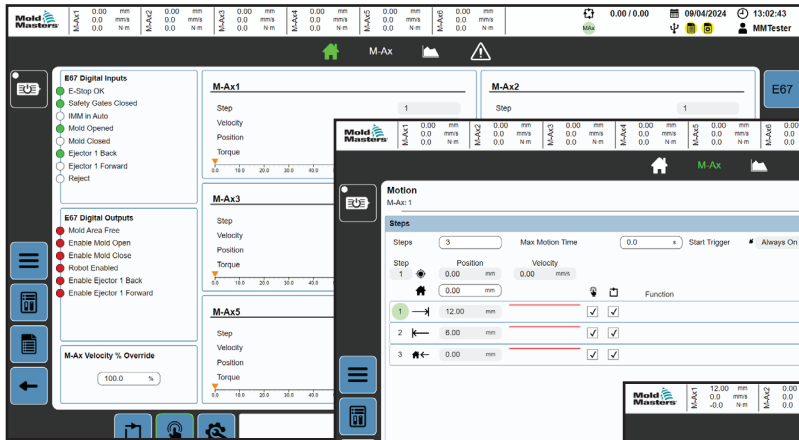
STANDARD

- Valve gates
- Core pulls
- Coining plates
- Index plates
- Stripper plates
- Ejector plates
- Rotary tables
- Spin stack

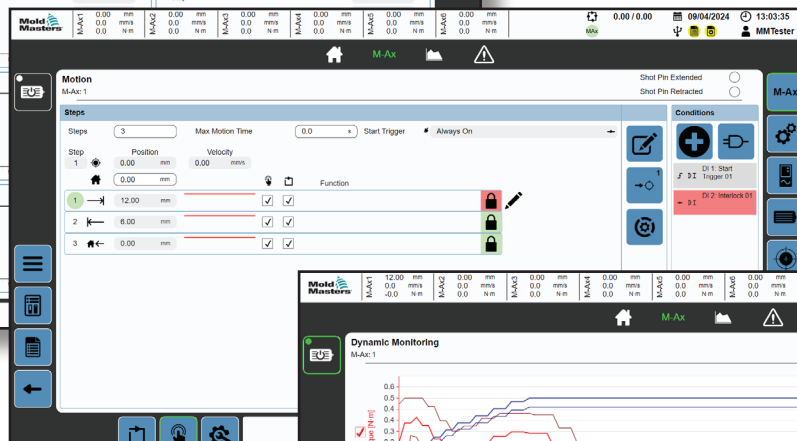
ADVANCED

- E-Drive
- E-Multi
- And more...

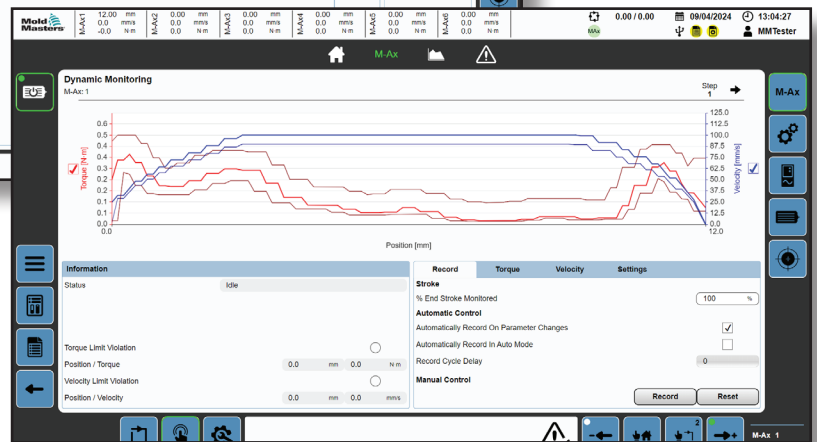
INTUITIVE CONTROL SCREENS



Home Page



Motion Page



Dynamic Monitoring Page

- Simple to use.
- Requires minimal familiarization.
- Faster start-ups.

STANDARD CONFIGURATIONS

CABINET SIZE	S	M	L	XL
Servos (Max)	3	3	1	2 / 1
Servo Amps (Max)	4.5	8.8	22	22 / 44

Custom configurations available upon request.

SYSTEM OPTIONS

- Rotary or Linear movements.
- Up to 64 programmable I/O (32/32).
- Robot E67 Interface (Out).
- Motors supplied (customer specified).
- Integrate TempMaster hot runner temperature control featuring precise APS control technology.