

EXTEND YOUR CAPABILITIES INTO SMALL MULTI-SHOT APPLICATIONS

Easily and economically convert any existing Injection Molding Machine to allow multi-shot capabilities. The successful E-Multi, all electric, auxiliary injection platform offers proven precision, repeatability, versatility and reliability. The E-Multi mini is perfectly suited to meet the processing and capacity demands of your small shot multi-material applications across any industry.

KEY FEATURES

BROAD APPLICATION SUITABILITY

- Multi-Shot.
- Multi-Material.

SERVO DRIVEN

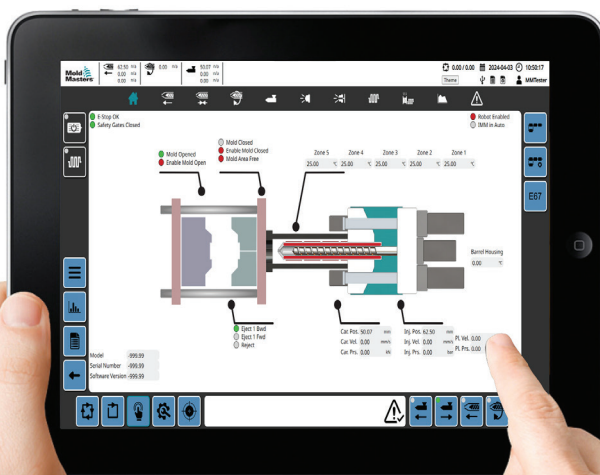
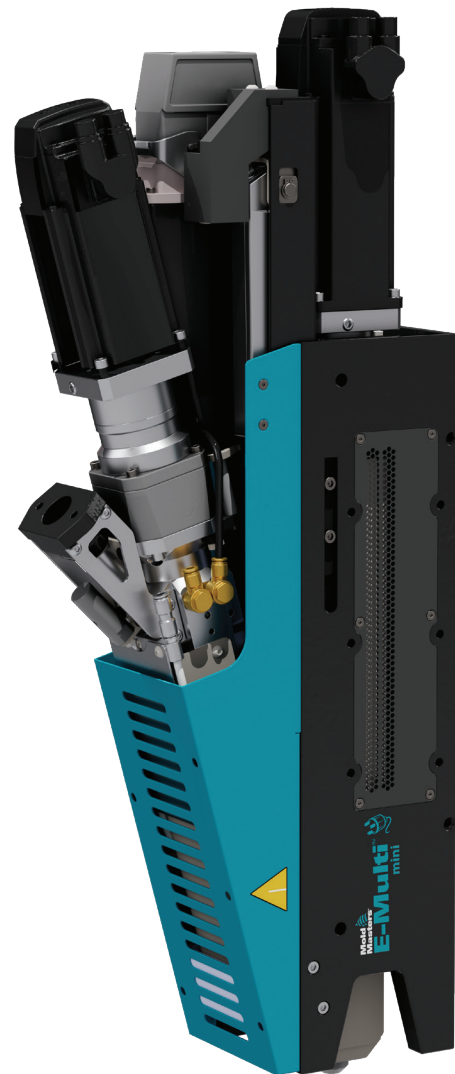
- High precision, fast, repeatable and reliable performance.
- Suitable for high tolerance applications.
- Maintain critical shot weight accuracy.

UNIVERSAL COMPATIBILITY

- Mounts directly to the mold.
- Can be installed vertically, horizontally or at any angle.
- Utilization on **ANY** Injection Molding Machine.

ALL ELECTRIC

- Viable for clean room applications.
- Minimal maintenance requirements.



Optional wireless control via tablet

SPECIFICATIONS

Model Number		EM-MINI		
Plunger Diameter	mm	8	9	10
	in	0.31	0.35	0.39
Injection Pressure	bar	2,000	1,580	1,280
	psi	29,000	22,900	18,550
Injection Stroke	mm	60		
	in	2.3		
Nozzle Stroke	mm	100		
	in	3.9		
Shot Volume	cc	3.0	3.8	4.7
	oz. PS	0.11	0.13	0.17
Shot Weight	g PS	3.0	3.8	4.7
	lb.	0.007	0.008	0.010
Feed Screw Diameter	mm	16		
	in	0.63		
Max. Screw Speed	rpm	350		
Max. Screw Torque	Nm	25		
Screw Ratio	L/D	13		
* Max. Injection Velocity	mm/s	200		
	in/s	7.9		
* Max. Injection Rate	cc/s	10	13	16
	oz. PS/s	0.35	0.45	0.55
Nozzle Contact Force	kN	10		
	lbf	2,200		
Unit Weight	kg	55		
	lbs	121		
Unit Dimensions	mm	830 L x 140 W x 335 H		
	in	32 L x 6 W x 13 H		

ADVANCED FULL FUNCTION CONTROLLER

- Full featured.
- Compact design.
- Wired pendant interface (standard).
- 12" touch screen display (optional).
- Wireless tablet interface (optional).
- Easy to navigate software.

The controller is equipped with SPC (Statistical Process Control), data logging and Multi-Level password protection.

QUESTIONS? CONTACT US TODAY!

E-Multi@moldmasters.com



Controller shown with optional 12" touch screen and mobile stand