

EXTEND YOUR CAPABILITIES INTO SMALL MULTI-SHOT APPLICATIONS

Easily and economically convert any existing Injection Molding Machine to allow multi-shot capabilities. The successful E-Multi, all electric, auxiliary injection platform offers proven precision, repeatability, versatility and reliability. The E-Multi mini is perfectly suited to meet the processing and capacity demands of your small shot multi-material applications across any industry.

KEY FEATURES

BROAD APPLICATION SUITABILITY

- Multi-Shot.
- Multi-Material.

SERVO DRIVEN

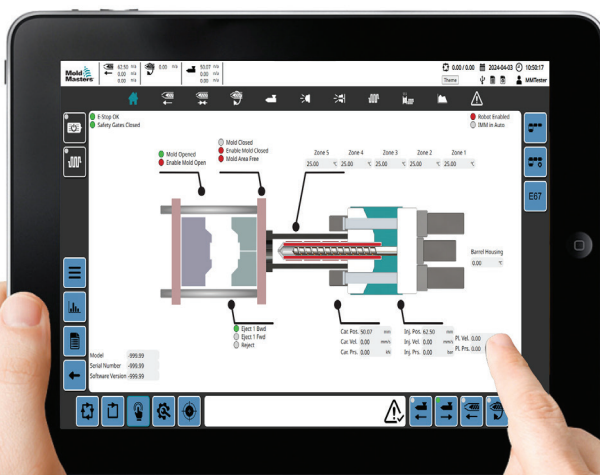
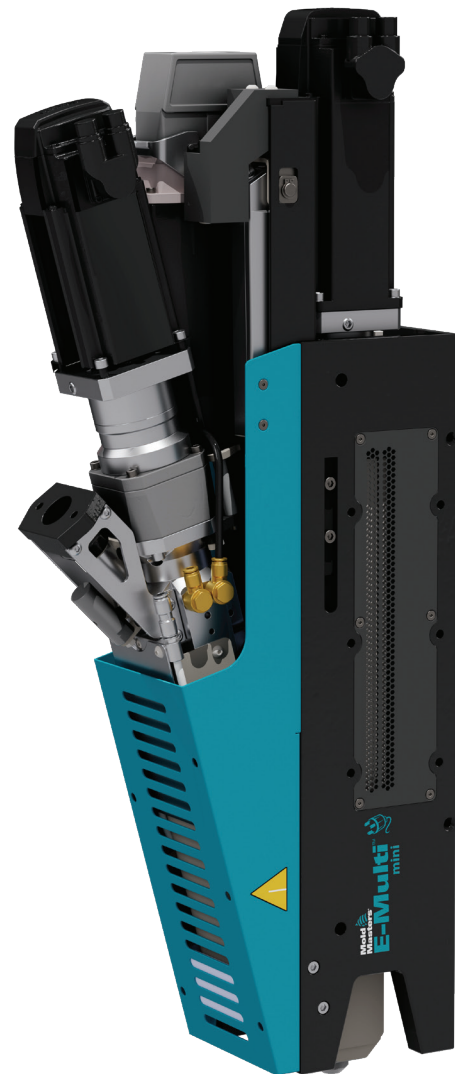
- High precision, fast, repeatable and reliable performance.
- Suitable for high tolerance applications.
- Maintain critical shot weight accuracy.

UNIVERSAL COMPATIBILITY

- Mounts directly to the mold.
- Can be installed vertically, horizontally or at any angle.
- Utilization on **ANY** Injection Molding Machine.

ALL ELECTRIC

- Viable for clean room applications.
- Minimal maintenance requirements.



Optional wireless display
tablet interface.

SPECIFICATIONS

Model Number		EM-MINI		
Plunger Diameter	mm	8	9	10
	in	0.31	0.35	0.39
Injection Pressure	bar	2,000	1,580	1,280
	psi	29,000	22,900	18,550
Injection Stroke	mm	60		
	in	2.3		
Nozzle Stroke	mm	100		
	in	3.9		
Shot Volume (Max)*	cc	3.0	3.8	4.7
	oz. PS	0.11	0.13	0.17
Shot Weight	g PS	3.0	3.8	4.7
	lb.	0.007	0.008	0.010
Feed Screw Diameter	mm	16		
	in	0.63		
Max. Screw Speed	rpm	350		
Max. Screw Torque	Nm	25		
Screw Ratio	L/D	13		
* Max. Injection Velocity	mm/s	200		
	in/s	7.9		
* Max. Injection Rate	cc/s	10	13	16
	oz. PS/s	0.35	0.45	0.55
Nozzle Contact Force	kN	10		
	lbf	2,200		
Unit Weight	kg	55		
	lbs	121		
Unit Dimensions	mm	830 L x 140 W x 335 H		
	in	32 L x 6 W x 13 H		

*Shot Volume (Min. Theoretical): 0.1cc / 0.01 oz

ADVANCED FULL FUNCTION CONTROLLER

- Full featured.
- Compact design.
- 15" touch screen display (standard).
- Wireless display tablet interface (optional).
- Easy to navigate software.

The controller is equipped with SPC (Statistical Process Control), data logging and Multi-Level password protection.

QUESTIONS? CONTACT US TODAY!

E-Multi@moldmasters.com



Controller shown with standard 15" touch screen and optional mobile stand.