

A HIGHLY ECONOMICAL STANDARDIZED SYSTEM FOR SIMPLE COMMODITY APPLICATIONS

A configurable 1-16 drop hot runner system suitable for applications processing commodity resins. Allows simple projects to get off the ground faster with minimal investment. Ideal for many cost sensitive consumer goods, small home appliances, basic automotive components, electronic peripherals/accessories and other similar applications.

KEY FEATURES

CONFIGURABLE DESIGNS

- Standard nozzles.
- Standard gating options.
- Standard manifold layouts.
- Custom manifold pitch ranges.

FIELD REPLACEABLE COMPONENTS

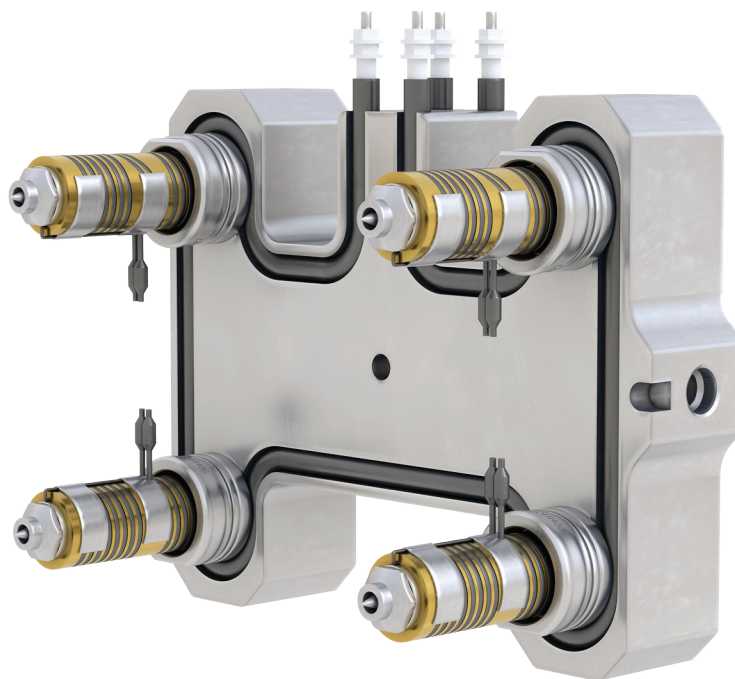
- Quick and simple to service.
- Replaceable nozzle and manifold heaters.
- Minimizes downtime and operating costs.

RAPID LEAD TIMES

- Drawings available within 48 hours.
- Delivery within 3-4 weeks.

GLOBAL SUPPORT

- Strong local aftermarket support.
- On-hand inventory of spare parts.
- Parts available with short lead times.



COMPATIBLE MATERIALS*	
ABS	PS
PE	TPE
PP	TPO

*Fillers/Additives not permitted

SPECIFICATIONS

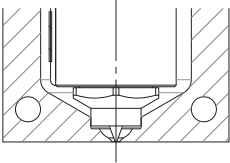
NOZZLE RANGE		04	06	08	10	12	16
Shot size* (g)		<10	<50	<150	<400	<1,000	<1,500
Runner Ø	Non-Valved (mm)	4	6	8	10	12	16
	Valved (mm)	-	6	8	10	12	16
Pitch (Min)	Non-Valved (mm)	28	38	42	44	44	50
	Valved (mm)	-	54	61	70	86	104
Nozzle Bore Ø (mm)		18	28	30	34	36	42
Length Range ¹ (mm)		50 – 140	60 – 160	60 – 180	50 – 160	50 – 200	70 – 300

*Application dependent.

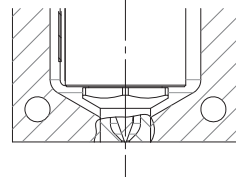
GATING OPTIONS

Non-Valved

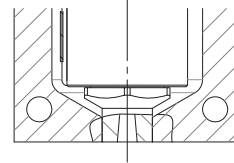
Point Gate
(Bodiless)



Point Gate
(Full Body +EXT)

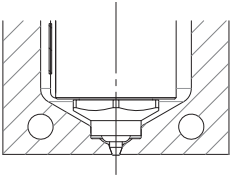


Sprue Gate
(+EXT)

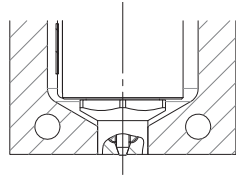


Valved (Tapered VP)

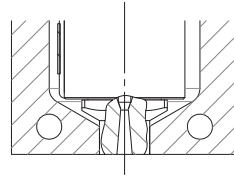
Bodiless Tip



Full Body Tip
(+EXT)



Sprue Tip
(+EXT)

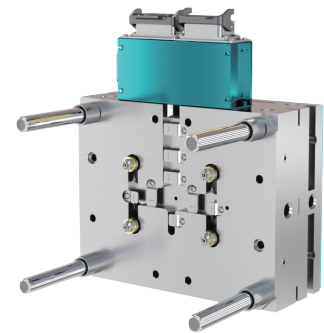


ELECTRICAL CONNECTORS

48-Pin, Male+Female
MPLUG.12 (Customer supplies E-Box)
24-Pin Male HBE-24
MPLUG.06 (Customer supplies E-Box)
24-Pin Female HBE-24
030-2018 (Customer supplies E-Box)
DME Standard Style
PTC12TBGTS (Includes complete E-Box assembly)

OPTIONAL COMPONENTS & SERVICES

- Locating ring
- Drool ring
- Application review
- Installation support
- **NEW** Hot half plates (non-valve gate systems only)



TempMaster™
series *Me*

For peak performance and superior results, Mold-Masters recommends using TempMaster ME controllers with all EcoONE-Series hot runner systems. Unlock your operations full potential with TempMaster.