



TempMaster™ series M2+^{PLUS}

**ADVANCED, FULLY FEATURED
CONTROL FOR SUPERIOR MOLDING
PERFORMANCE IN ALL APPLICATIONS**

CONSUMER GOODS



MEDICAL



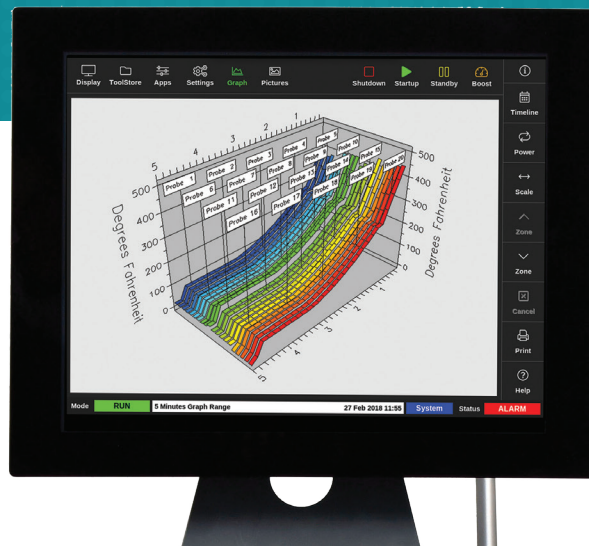
ELECTRONICS



PERSONAL CARE



SUSTAINABILITY



CAPS & CLOSURES



THIN WALL PACKAGING



PET (DRINK BOTTLES/PREFORMS)



AUTOMOTIVE



BIO-RESINS



PRODUCT HIGHLIGHTS



APS CONTROL TECHNOLOGY

- Precision heat control algorithm.

FULL COLOR TOUCH SCREENS

- Intuitive and easy to use.
- Available in 8", 12", and 17" sizes.



EXTENSIVE INTEGRATION OPTIONS

- SVG (Sequential Valve Gate) Control.
- E-Drive Electric Synchro Plate Control.
- M-Ax Mold Servo Motion Control.
- E-Multi Auxiliary Injection Control.
- Water Flow Monitoring.

NEW MANIFOLD PLASTIC LEAK DETECTION (Optional)

- An industry first.
- Utilizes Thermal Analysis to detect plastic leakage within the manifold pocket.
- Provides an enhanced layer of protection.
- Available as an option on all M2+ controllers.

COMPACT DIMENSIONS

- Up to 53% smaller footprint than competitive systems.

IO INTERLOCK

- Synchronize with the injection machine to protect the mold and minimize downtime.

INDUSTRY 4.0 READY

- Euromap 82.2.
- SmartMOLD compatible.

Cabinet Size	# of Cards (Max)	# of Zones (Max)	Dimensions WxDxH cm (in.)
XS	6	24	31x45x81 (12x18x32)
S	12	48	36x45x96 (14x18x38)
M	24	96	45x60x116 (18x24x46)
L	36	144	45x60x141 (18x24x56)
XL	63	252	56x61x168 (22x24x66)

Based on 4z-15A cards. Increase max zones with 6z-5A cards.

Screens



TS8



TS12



TS17